

Grants for Research and Projects

Did you pick up a
handout packet from
the table?

**PLEASE SILENCE CELL
PHONES**

Ellen Jacks,
Grants Librarian
go.wisc.edu/grants
Grants Information Collection
Memorial Library Rm 262D/E

Today's Program

- ▶ Overview of the Grants Information Collection
- ▶ What you need to know before looking for grants
- ▶ How you can identify funding partners
- ▶ Library resources for your grant seeking efforts
- ▶ Databases demonstration and hands-on session

Blue Handout:
Presentation
slides

Grants Information Collection

- ▶ [Funding Information Network partner of the Foundation Center](#)
- ▶ Library collection (not a research service)
- ▶ Memorial Library Room 262 D/E
- ▶ Open all library hours
- ▶ Print & Online Resources
- ▶ Website: go.wisc.edu/grants

What IS a grant?

- ▶ An award for which there is no expectation of repayment or services to be performed
- ▶ A Gift of money (or something worth money) to be used for “charitable purposes.”

Types of Grants

- Fellowships
- Scholarships
- Travel
- Research
- Etc.

Note: Not all grantmakers read/follow the official definition of “grant types.”

Most important is: does a specific grantmaker allow you to use the money as you need?

Who Gives Grants?

- ▶ Educational Institutions
 - UW–Madison, UW–System...
- ▶ Foundations
 - Private, community, corporate
- ▶ Businesses
- ▶ U.S. Government–sponsored
 - Federal, state, local
- ▶ Associations & Societies
 - Rotary Club, Wilson Ornithological Society...

Yellow Handout:
Non–governmental
grantmakers

What is a foundation?

- ▶ Non-governmental entity
- ▶ Established as a nonprofit corporation or a charitable trust
- ▶ Principle purpose of making grants to unrelated organizations, institutions, or individuals for scientific, educational, cultural, religious, or other charitable purposes.
- ▶ Foundations contributed \$47.43 billion in grant money for FY 2012
 - Note: Many foundations give primarily to non-profit organizations

Yellow Handout:
Non-governmental
grantmakers

Federal Grant Spending in 2015: \$614.415 billion



Search Data by Keyword Search Site

Enter Keyword

[Advanced Data Search](#)

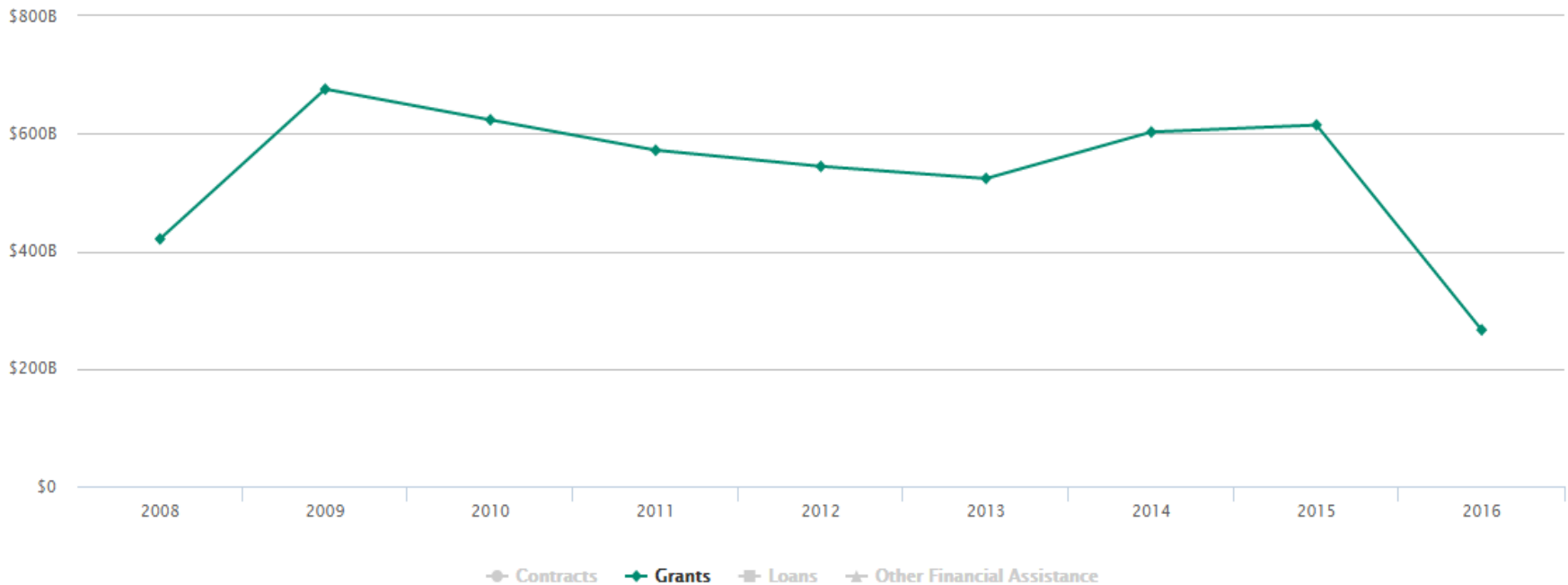
- [HOME](#)
- [ABOUT](#)
- [WHERE IS THE MONEY GOING](#)
- [REFERENCES](#)
- [DOWNLOAD CENTER](#)
- [CONTACT US](#)

[USAspending](#) > [Where is the Money Going](#) > Overview of Awards by Fiscal Year

OVERVIEW OF AWARDS BY FISCAL YEAR

Roll over the individual trending lines to see totals for the award type for a fiscal year. To see the totals for all award types in a fiscal year, go to the Text View.

OVERVIEW OF AWARDS BY FY 2008 – 2015



[Text View of Overview of Awards by Fiscal Year](#)

Who's willing to fund you?

To determine this we want to look at both:

- ▶ What grantmakers SAY they will fund
- ▶ What they have actually funded in recent the past

Specifically regarding these aspects:

- ▶ How you can spend the money
- ▶ Who they're willing to fund
- ▶ Where they're willing to fund
- ▶ Subject/topic interests

Who is interested in funding...

YOU as a person?

- Level of study completed or position (esp. for staff)
- Demographic characteristics
(e.g., gender, race/ethnicity, single-parent, returning student, etc.)
- Citizenship/residency
- Long-term goals
- Geographic Location of the activity to be funded
- And more

Your Organization?

- Type of organization
(e.g., university, research group, lab, hospital, types of populations served, etc.)
- Geographic location (Wisconsin, Midwest, US, etc.)
- Population served by your organization

What "type(s) of funding" or "grant" will they give?

(i.e., how you can spend the money)

Individual

- ▶ Study
(scholarship, fellowship, doctoral completion, doctoral planning, stipend, etc.)
- ▶ Research
- ▶ Travel
- ▶ Conference attendance
- ▶ Etc.

Organization

- ▶ Research
- ▶ Projects
- ▶ Curriculum development
- ▶ Conference development
- ▶ Equipment
- ▶ Use of facility
- ▶ Endowments, etc.

Office of Research and Sponsored Programs:

Main web site: <http://www.rsp.wisc.edu/index.html>

Contact person(s): <http://www.rsp.wisc.edu/cnsrescont.html>

Is Sponsorship an Option?

- ▶ Most grant makers give to nonprofits
- ▶ Research or projects are sometimes eligible – speak to your department or the office of Research and Sponsored Programs

<http://www.rsp.wisc.edu/>

- ▶ If you can get a “fiscal sponsor” or “institutional affiliation” you may be eligible for many more funding opportunities

- ▶ How to find a fiscal sponsor:

<http://grantspace.org/Tools/Knowledge-Base/Funding-Research/Definitions-and-Clarification/Fiscal-sponsorship>



Research and Sponsored Programs

University of Wisconsin Office of the Vice Chancellor for Administration

Search:

[HOME](#)

[FINDING FUNDING](#)

[PROPOSAL PREPARATION](#)

[AWARD SETUP](#)

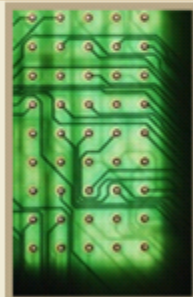
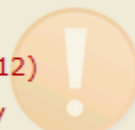
[AWARD MANAGEMENT](#)

[AWARD CLOSEOUT](#)



Important Updates ::

- FCOI Changes (Eff 8/24/12)
- Conflict of Interest Policy
- Office of Industrial Partnerships
- NIH Salary Cap Change
- Accelerating ARRA Spending



Frequently Accessed :: Pages

- Staff Contacts
- Accountant Search
- Award Search
- Budget Development Tools
- Careers @ RSP
- Check Routing
- Compliance
- Cost Sharing
- Cost Transfer Policy
- Database Queries
- Effort Reporting
- Forms
- Frequently Used Data
- Gifts

RSP promotes and facilitates the research, education, and outreach missions of the University of Wisconsin-Madison by supporting and administering extramurally sponsored programs.

Award Lifecycle



Finding Funding

Find internal/external resources and links to funding opportunities for supporting your research.

Proposal Preparation

Software, tools, and information on getting your proposal routed and submitted correctly and on time.

Once funded, this will guide you through the process to get your award set up.

Electronic Tools ::



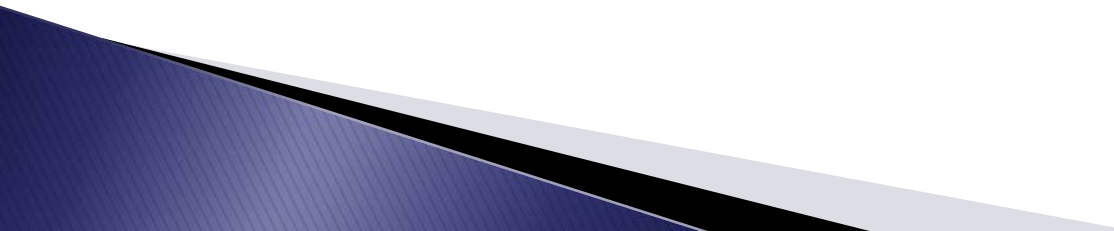
Who would be interested in your research/project (i.e., potential stakeholders) ?

- ▶ Topic/Subject
- ▶ Technique/approach/theory/school of thought
- ▶ Technology used
- ▶ Population/location studied
- ▶ Population groups to benefit
- ▶ Future applications of understanding, technology, etc.
- ▶ Outcomes (immediate and long-term)



Broadly and specifically!

Where to look:

- ▶ Subject or population-specific print directories
 - ▶ Subscription and free databases
 - ▶ Foundation & Government Agency Web sites
 - ▶ Requests for Proposals (RFP) sites
 - ▶ Journals and the research of others
 - ▶ IRS Tax Returns
 - ▶ Everywhere
- 

Databases and Search Sites

- [COS Pivot](#)
- [RSP Funding for Graduate Students](#) (set-up profile)
- [SPIN](#)
- [Grant Forward](#) (formerly IRIS)
- [Foundation Grants to Individuals](#) (Memorial Library only)

- [Foundation Directory Online](#) (For orgs; Memorial Library only)
- [Grants.gov](#)
- [Catalog of Federal Domestic Assistance](#)

Gold Handout:
Recommended
databases

RFP Sites (a sampling)

- Philanthropy News Digest RFPs
<http://foundationcenter.org/pnd/rfp/>
 - Chronicle of Philanthropy Deadlines for Grants & Awards
<http://philanthropy.com/deadlines/>
-
- Art Deadline List
<http://artdeadlineslist.com/>
 - H-Net Online (Humanities & Social Sciences)
<http://www.h-net.org/announce/group.cgi?type=Funding>
 - National Endowment for the Humanities Grants & Deadlines
<http://www.neh.gov/grants/grants.html>
 - National Science Foundation: Up-coming Due Dates
http://www.nsf.gov/funding/pgm_list.jsp?org=NSF&ord=date
 - Scangrants.com: Medical & Biological Science Research Deadlines
<http://www.scangrants.com/Search.aspx>

Checking Track Records

▶ Foundation Giving

- Tax returns: 990PF and 990
 - Foundation Directory Online Free: <https://fdo.foundationcenter.org/>
 - GuideStar: <http://www2.guidestar.org/AdvancedSearch.aspx>
 - Foundation Directory Online (Memorial Library only)
- Past grants and track records:
 - Chronicle of Philanthropy Guide to Grants:
<http://grants.philanthropy.com/pcgi-bin/premium/gtg/taxis/premium/grants/gtgsearch?homepage=1>
- Individual grantmaker web sites

▶ Government Giving

- NEH Budget and Annual Reports
<http://www.neh.gov/about/legal/reports>
- USASpending.gov
<http://usaspending.gov/>
- Individual agency web sites

Know Grantmaker's Requirements

- ▶ Eligibility
- ▶ Most recent guidelines
- ▶ Initial Contact:
 - Email?
 - Phone call?
 - Letter of Inquiry?
- ▶ Full Proposal? Or Own Application Form?
- ▶ Deadlines, follow-up, expectations, etc.

Remember, the Grants Information Collection also has resources on proposal writing

Red Handout:
Tips for the
application process

Application Process

1. Firm up your plan of study and specific financial needs
2. Conduct research to identify funders
3. Give yourself plenty of time
4. Follow funders guidelines carefully
5. Submit applications early and to multiple sources
6. Stay determined
7. Talk to others

Red handout:
Tips for the Application Process

Thank you!

Stick around to work with the funding databases

Ellen Jacks, Grants Librarian
Grants Information Collection, Memorial Library

go.wisc.edu/grants

608-262-6431

White Handout:
Evaluation form